

**2025** Annual Report



**EASTERN BAY**  
**COMMUNITY FOUNDATION**



**Our growing  
impact in the  
Eastern Bay  
of Plenty**



# Sustainable Development Goals

In 2015 the United Nations adopted a 15 year plan to make significant changes across the globe- a shared blueprint for peace and prosperity, for people and planet and partnerships to make these changes. In October 2023, the Eastern Bay Community Foundation Board of Trustees also adopted these goals to align with how we work with our communities in the Eastern Bay.

Sometimes when world events seem 'so extreme' ...we feel powerless to make changes. However, by adopting the UN Sustainable Development Goals we are aligning to a set of principles as a guiding light to how we work with donors, how we make decisions on grant funding and how we provide leadership in this space in our region.

Ending poverty goes hand in hand with strategies that improve health and education, reduce inequality and make space for economic growth- all the while tackling the REALLY BIG ISSUES of Climate Change - working to preserving our oceans and our forests.

Decades of work and global research has gone into these principles- and now at a local level we can also use these as our guide, right here in the place we call home. You can help us to achieve these goals by considering the planet you want to leave behind for our children's children.



# How far we have come

**2014**

New Trustees Miles Mander, Douglas Bull, Robyn Towersey, Jacqui Hughes, Barney Gray and Grant Lowe joined Peter Anstis and Ray Sharp. Executive Officer Sarah-Jane Hasman.

**2019**

Whakaari/White Island eruption. Opotiki Kiwifruit Growers Community Endowment Fund Launched. Established Strategic plan for Foundation. Trustee Robyn Towersey dies. **3 new funds established.** Disaster Fund established.

**2021**

Covid restrictions continue. Number of Trustees increased to twelve representing the three districts. Launched Ambassador programme. Establishment Trustees Miles Mander and Peter Anstis step down from board. Peter Anstis was appointed as Patron. New Trustees appointed: Annette Papuni-McLellan, Paul Nicolson, Bradley Shaw, Jimmy Heal and Leisha Thompson. Operational support: Lyndell Jones employed. Billboard signage erected across district. Milestone of first \$M in funds under management. **6 new funds established including Women's Impact Fund.**

**2025**

Attestation achieved. Angela Jackson appointed as Foundation Manager, Mike Howe joins the team as Engagement Manager. New Trustee Dean Cole appointed to the board. Annual Dinner held with Sir Ian Taylor as guest speaker, Tawera Nikau event and school visits. Xmas food parcels distributed for vulnerable seniors in the community as part of the Craigs Christmas giving initiative. Established SuperLegacy donations. Held a charity Golf Tournament in conjunction with Rural Support and Fonterra. Trustee Trina Hayes resigns from the board. New database and new website launched. Bequest received. Milestone of \$2M funds under management. **3 New funds established.**

**2005**

Opotiki Community Trust steering group established **Trustees** Peter Anstis, Bryan Gould, Barbara Collis, Ian Craig, Ray Sharp

**2005-2013**

Actively engaging with Opotiki Community Groups. Opotiki Development Trust and Opotiki Community Foundation Deeds signed. Seed funding provided through Opotiki District Council. Meetings held with EBOP Mayors and Business leaders to consider expansion Eastern Bay wide.

*First Endowment Fund Established.*

**2015**

**April 21st**  
Eastern Bay Community Foundation Launched

**2016**

Kaye Boreham begins contract work as Executive Officer, Helen Stewart joins the Board.

**2017**

Rosemary Sloman Employed as Executive Officer. Edgecumbe stopbank breached, major flooding. **2 new funds established**

**2018**

Independent Vital Signs Research shared with community. Robyn Woolsey joins the Board. **6 new funds established**

**2020**

Covid Pandemic grips the world, borders close. Trustees Helen Stewart and Barney Gray step down as Trustees. Hosted first Annual Dinner. Viv Barr joins the Board as Trustees, and appointment of Treasurer Christine Mansell. **8 new funds established.**

**2022**

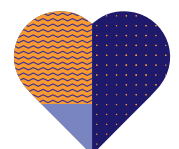
Established first memorial fund, Chair Douglas Bull steps down, Deputy Chair Scottie McLeod takes on leadership. Trustee Jacqui Hughes steps down. **2 new funds established.**

**2024**

First Scholarships awarded. Kawerau Trustee Trina Hayes appointed, Executive Officer Rosemary Sloman retires. **10 new funds established.**

**2023**

First Trust Transfer completed. First Charity Golf Tournament held, original Trustee Ray Sharp steps down after 15 years. Five donors, including our first donor, pass away. New Strategic Plan adopted. Operational support: Angela Jackson employed. **5 new funds established.**





# Chairperson's Report

## 2024-2025

It is my privilege to present this annual report. The year has seen the foundation grow our funds under management and deliver \$172,876 to worthy recipients. This is almost double last years.

This organisation needs more funds under management, and we are ever grateful to the people who bequeath or donate funds towards whatever interests they care about. That includes pass through donors, the Ōpōtiki Kiwifruit growers and also the Eastern Bay Women's Impact Fund that Viv Barr and Robyn Woolsey organise so well. These funds highlight the value of collective giving. We have introduced a new product for giving which is called the Super legacy scheme, this is where individuals donate their superannuation to the foundation for operational purposes. This is gaining traction.

During the year we held our annual dinner at Ōhope Golf Course featuring Sir Ian Taylor, who was an inspirational speaker, talking about seizing opportunities and doing the right thing for the next generation.

In February we hosted Tawera Nikau. He talked of mental health and was very influential getting his message across. We took him to Rangitāiki College and Tarawera High in Kawerau. The observation was that he had the students so spellbound, you could hear a pin drop. Thanks go to Grant Lowe and Jimmy Heal for leading this project.

Angela Jackson our EBCF Manager, has had a busy year chipping up a lot of successes. She has modernised our office practices with a new database, a new website and gained Attestation from CFANZ. To gain this certificate of Attestation recognition thanks also goes to CFANZ, Viv Barr and Christine Mansell for the hours they contributed.

Mike Howe, our Engagement manager is gaining results in the community. The results are telling with the Super legacy scheme. Angela and Mike who are both new in their positions this year bring energy and professionalism to the foundation. Gae Finlay is our Board Secretary and keeps meetings functioning. Thanks to the staff.

The Eastern Bay Community Foundation is fortunate to have dedicated hard-working Trustees whom I depend on. The trustees are always a very positive group of people. The Trustees welcomed Dean Cole on to the board. Trina Hayes resigned due to work commitments and family pressure. She made a valuable contribution during her time. Grant Lowe has given 8 years of sterling service on the board. Grant is one of those people who never say no when asked to do a task. Thanks to Trina and Grant.

We have a very active and effective marketing team which has produced a video promoting the Community Foundation. This has been showing in both the Whakatāne and Ōpōtiki Cinemas. Thanks to the Chair of this team, Brad Shaw and his committee members, Jimmy Heal, Dean Cole and Cherie Stevenson. They have a very good marketing plan going forward.

Viv Barr is our Policy person, and she does this single-handedly really well. Each monthly meeting a section of our policies is reviewed. Robyn Woolsey is Chair of the Distribution Committee. She is really busy when the distributions are made, but nothing seems to fluster her. Paul Nicholson chairs the Investment committee. Paul has a handle on the investments and liaises with Craig's Investments. Jimmy Heal is the Chair of People and Capability. He is also the Deputy Chair of the Board. He has been a great support to me in this role during his term. Christine Mansell is our Treasurer as well as being a Trustee. She is the best and most efficient Treasurer I have ever worked with.

There is a great deal of teamwork between Staff and Trustees to make everything happen efficiently. During the year we have appointed some people ex officio to committees to assist the Foundation with their expertise and knowledge. Thanks to Cherie Stevenson and Shannon Harnett.

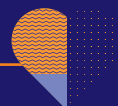
Earlier this year the Trustees and staff attended a team building day in Rotorua which involved zip lining and a visit to Birds a Plenty.

My thanks go to Rural Accountants Whakatāne and our auditors, Cookson Forbes Chartered Accountants Ōpōtiki for their generous support.

In conclusion, I would sincerely thank all Trustees and Staff as well as the donors to the Foundation. The success of the Foundation relies on all of you, and this enables us in turn, to give back to our community. The Eastern Bay Community Foundation is in good heart going from strength to strength to deliver good results.



**Scottie McLeod**  
Chairman



# Foundation Managers Report 2024-2025

It is with great enthusiasm that we present our 2024-2025 annual report, our story of what happened in the last financial year. This report reflects the milestones we have achieved, the collective vision that drives us forward and we are pleased to share these highlights with you. This year has been one of growth, innovation and collaboration. We are incredibly proud of what we have accomplished as a team and look to the future growth of our Community Foundation and how it will impact our communities in the future. I am very grateful for the unwavering support of our dedicated EBCF Whānau, donors, partners and community.

Looking ahead we remain committed to strive to connect people with causes they care about and make a difference in our communities in the Eastern Bay of Plenty now and in the future.

In my role I get to meet with generous people who are considering giving back to their community and also to meet with charities and organisations that are striving to make a difference. It is fulfilling to see the optimism and desire people have to make a difference and leave a legacy.

I would like to thank our Chairperson and our Trustees for their guidance and support, to Mike Howe (Engagement Manager) for his steadfast support, Treasurer, Christine Mansell and Board Secretary Gae Finlay for their assistance and to the Synergy Accounting team for letting the Eastern Bay Community Foundation office be part of their team.

We will continue to build on the work done, working towards an even brighter future for our Community Foundation and the Eastern Bay of Plenty region.

Thank you for everything you do, either volunteering with our community foundation or working with us as a partner and supporter. It makes a huge difference.

Thank you for being a key part of our journey, we look forward to continuing this path with you by our side.

He Waka Eke Noa



**Angela Jackson**  
Foundation Manager



*Jimmy Heal, Robyn Woolsey, Angela Jackson and Mike Howe at Community Foundations Aotearoa New Zealand Conference 2025 in Christchurch*

## Attestation

The Eastern Bay Community Foundation have reached our goal of achieving attestation.

The Community Foundations Aotearoa New Zealand (CFANZ) attestation means that we comply with the highest standards.

Our certificate of National Quality Standards Certification was presented at the CFANZ national conference in Christchurch in October 2024.

*Photo: EBCF Manager Angela Jackson and Trustee Robyn Woolsey at CFANZ conference 2024 with the Attestation certificate.*



# Grant and Funding Recipients 2024

## General Grants and Distributions

Arts Whakatāne – Youth Grants  
Ōpōtiki College Music Department  
Ōpōtiki Museum  
Alzheimers EBOP  
Look Good Feel Better  
Waiotaha Valley School  
Edgecumbe School  
Rangimarie Trust  
St Johns Church – Little Bears Music Group  
St Johns Church – Panna Soccer Cage  
Motor Neurone Disease NZ  
Thornton Park Rest Home  
Waiariki Whanau Mentoring  
Local survivors of Whakaari eruption

## Ōpōtiki Kiwifruit Growers Community Fund

Community Fund  
East Bay Reap House of Science Kits  
Outward Bound sponsorship – Opotiki College  
Ōpōtiki Blue Light  
Ōpōtiki Sports  
RSE family support  
Ōpōtiki Cadets

## Eastern Bay Women's Impact Fund

Kiwi English classes English Language Partners  
Financial Mentoring Services  
Mums4Mums  
Mona Lickfold Charitable Trust (cancer support)

## Scholarships

### Rod McPherson Rural Scholarship Fund

Emma Rose Black

### Jean Smithson Nursing Scholarship recipients

Kayla Norton,  
Jess Newton-Green

### Opotiki College Bridger Family Trades Scholarship

Charlie Hayward

## Causes we supported

Mental Health, Music, Environment, Youth Education and Opportunities, Health, Social and Parenting Support, Preserving Heritage, Arts, Disability Support, Housing, Cancer Support, Support for Seniors, Safe Communities, Active Families.

## Events

Charity Golf Tournament, Annual Dinner, Women's Impact Luncheon, Tawera Nikau Mental Health Event and school visits, Christmas food parcels for vulnerable seniors in the Eastern Bay.



# Whakaari (White Island) Memorial Fund



December 9th, 2019, changed our community forever. Many people were affected by the Whakaari/White Island Eruption tragedy on the 9th of December 2019. Five years ago, the Eastern Bay Community Foundation responded by immediately establishing a fund receiving donations from New Zealand and overseas to assist local victims of the eruption, their families, and first responders.

In 2024 the Eastern Bay Community Foundation established a relationship with the Whakaari Memorial Steering Group and established the Whakaari Memorial Fund.

This is a true partnership, with the Community Foundation being a trusted independent repository

of funds donated towards the building of a Memorial to the Whakaari Eruption in 2019. The Whakaari Memorial will be a fitting tribute to honour those who lost their lives, and to create a space of solace and remembrance where whānau, friends and the community can gather. The project is led by the Whakaari Memorial Steering Group, this group comprises representatives from the Whakatāne-Ōhope Community Board, Te Runanga o Ngāti Awa and the community, with support from Whakatāne District Council.

The Eastern Bay Community Foundation will be the repository for the funds and the Whakaari Memorial Fund is a key community project of the Foundation.

## A vision for future community healthcare in the Ōpōtiki District

The newly established Ōpōtiki Community Health Trust Endowment Fund is a community partnership investing in the future of healthcare in the Ōpōtiki District.

In early March 2025 the Eastern Bay Community Foundation announced the agreement with Ōpōtiki Community Health Trust with the creation of a new community endowment fund – safeguarding and growing the future of healthcare in Ōpōtiki.

Lyn Riesterer, Chair of the Ōpōtiki Community Health Trust, says that Ōpōtiki Community Health Trust wishes to maximise our financial potential and continue to grow the community's health fund as part of its current strategic plan.

She states that “community partnerships are essential in order to achieve our ability to invest in the future of health in the Ōpōtiki District. While our vision incorporates a brand-new, all-inclusive health hub in Ōpōtiki we continue to invest in providing scholarships and trying to shape the workforce development, education and training as well. By investing our capital with the Eastern Bay Community Foundation, we are

maximising our potential to grow our putea as well as adding the ability for other people to contribute funds for our building project when the time is right.”

The ongoing community partnership the Eastern Bay Community Foundation has built with Ōpōtiki Community Health Trust will ensure Healthcare in the Ōpōtiki region is a focus and a priority now and in the future.



*Eastern Bay Community Foundation Chairperson Scottie McLeod and Ōpōtiki Community Health Trust Chairperson Lyn Riesterer signing the official establishment of the fund and working relationship.*



# Opotiki Kiwifruit Growers Community Fund

## *Kiwifruit Growers Working Hard to Grow a Prosperous Ōpōtiki Community*

The Ōpōtiki Kiwifruit Growers Community Fund was established in 2018 and was setup to enable local growers to give back to the community together. With growers choosing a contribution of 1 or 2 cents per tray of export fruit to build the fund held by the Eastern Bay Community Foundation.

This fund is a hybrid fund- supporting both immediate and long-term goals and has been borne out of a desire by local growers to support and grow their community and its facilities. The fund will be directed towards projects which create opportunities to grow and build a strong, resilient, and cohesive community. The Ōpōtiki Growers representative committee meet regularly throughout the year.

The Ōpōtiki Kiwifruit Growers Community Fund (OKGCF) has continued its vital work in the community despite the recent challenges faced by growers. Over the past year, our focus on empowering local youth has remained steadfast. We proudly funded a student to attend a life-changing course at Outward Bound and two others on a 10-day leadership voyage with the Spirit of New Zealand. These experiences provide invaluable personal development and a broader perspective for Ōpōtiki's young people.

In education, our partnership with REAP to provide House of Science Kits to primary schools has been a great success. These kits, focusing on pollination and biosecurity, offer interactive, hands-on learning that connects directly to our local industry and environment.

To foster a positive local identity, we sponsored sports tops for the Ōpōtiki Sports Club. This initiative aimed to provide an alternative and unifying symbol for

our youth, promoting community pride. Additionally, we supported the Ōpōtiki Cadets with funding for transportation, enabling them to participate in more training and development activities that build discipline and leadership.

The OKGCF is deeply grateful for the support of our local kiwifruit growers. Your contributions have been instrumental in making these initiatives possible. Looking ahead, we aim to continue to support the youth and continue building a better Ōpōtiki. We encourage all local growers to join us in this mission.

*We would like to thank the Growers, your commitment to the Community Fund amid pressures and challenges has been instrumental in keeping these initiatives alive. From education and youth empowerment to health and community pride, your contributions have enabled tangible, positive changes in Ōpōtiki, and we couldn't do it without you.*

*The Ōpōtiki Kiwifruit Growers Community Fund is proud to serve our district, and we remain committed to making an impact through meaningful projects and sustainable growth. We look forward to another year of partnership with each of you, working together to build a stronger, more vibrant community that reflects the resilience and generosity of the people within it.*

*Thank you once again for your ongoing support and dedication to the community we all call home.*

### **Chris Anstis**

Chairperson – Ōpōtiki Kiwifruit Growers Community Fund Committee



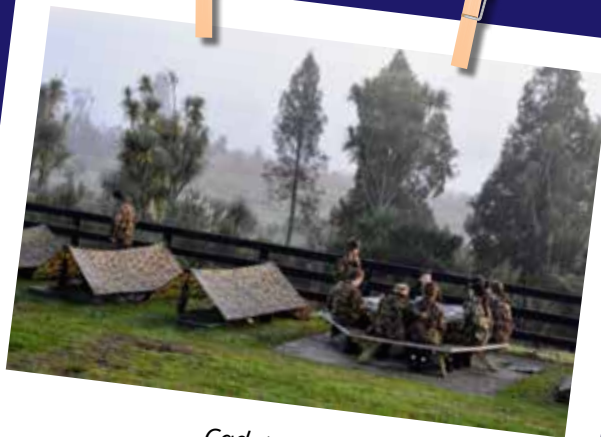
# EBOP WOMEN'S *impact* FUND



OKGCF Outward Bound



OKGCF Steinlager Yachting Trip 2023



Cadets Camp



Cadets on Te Kaha Frigate



The Eastern Bay Women's Impact Fund continues to be a successful giving circle in the Eastern Bay of Plenty.

The Eastern Bay Women's Impact Fund brings together generous local women from across our region, who are willing to donate \$1,000 to make tangible and impactful change for women and children in our communities. Donations for the Women Impact Fund are pooled together to make a positive and impactful difference to an initiative or project and enable significant progress towards providing building blocks that will benefit and improve the lives of women and/or children.

Donors to The Eastern Bay Women's Impact Fund for 2024 voted to support 4 charities/organisations making a difference to women and children in the Eastern Bay of Plenty. In 2024, the Impact Fund was able to make two large contributions to **Mums4Mums** and to **Whakatāne Financial Mentoring Services**, as well as smaller contributions to the **Mona Lickfold Trust (Cancer Support)** and **ELP Kiwi English classes**.

The 2025 Eastern Bay Women's Impact Fund is gaining donations and funds will be distributed in the latter part of 2025.

Since 2022 the women of the Eastern Bay Women's Impact Fund have donated over \$135,000 to the Eastern Bay Community. The Women's Impact Fund continues to be a key pass-through fund for the Eastern Bay Community Foundation with new donors coming on board each year.

*An exciting group of women coming together to make an impactful difference in our community.*



# Focusing on Mental Wellbeing in the Eastern Bay

The Eastern Bay Community Foundation was thrilled to be able to bring Tawera Nikau to the Eastern Bay of Plenty earlier this year. **Tawera Nikau NZOM**, is one of New Zealand's most celebrated Rugby League internationals. His journey is one of overcoming adversity, mental strength, and leadership. He has faced significant life challenges, both on and off the field, and has emerged as a true example of resilience and strength. His story is one of triumph in the face of life's toughest moments and provides invaluable lessons for anyone looking to grow through adversity.

Tawera spoke with Rangitahi at Tarawera College and Rangitāiki College in the afternoon and at the evening event at Awakeri event centre.

It was an evening of empowerment, personal reflection, and community support. The audience was captivated by Tawera's honest engaging stories of his league career, his upbringing in rural Huntly, he spoke of his wife's death when their children were young, and of having his leg amputated after a motorcycle accident.

It was an honest gritty story of how to cope, how to move on, having mental strength and why it's important to reach out for help and talk with others. The audience laughed, cried and reflected during his candid speech. Rangitāiki College said the key messages for students were the importance of a good work ethic and good attitude.

The opportunity to have Tawera come to the Eastern Bay and speak with two schools and the evening event happened thanks to the Mental Health Pass Through Fund held by the Eastern Bay Community Foundation. Every year a generous local couple make a donation to the Eastern Bay Community Foundation to be used to support Mental Health Initiatives in the Eastern Bay of Plenty. This fund is a Pass-Through fund meaning that funds are distributed during that financial year. Further donations to this pass-through fund are invited to help support mental health initiatives in our community.





# Christmas Giving with Craigs Investment Partners

*Responding to community need and looking out for our Kaumatua at Christmas time.*

On Wednesday 18th December staff, trustees, and families of the Eastern Bay Community Foundation teamed with staff of Waiariki Mentoring Services and staff of Here to Help U to pack and deliver 164 food parcels to seniors in need throughout the Eastern Bay of Plenty.

The Eastern Bay Community Foundation decided to spread joy and warmth to seniors in the Eastern Bay of Plenty with a generous donation of \$10,000 from Craigs Investment Partners as part of their annual Christmas Giving initiative.

The funds were used to provide food parcels to support seniors aged 65+ who may be facing social isolation, health and mobility challenges, or financial difficulties.

There was such demand for the food parcels that the original 120 boxes planned grew to 164 delivered parcels across the district. Each food parcel contained essential groceries and an information leaflet detailing local support services available to help seniors.

Feedback poured in from grateful recipients, and we were thrilled to have been able to work collaboratively with other agencies and be part of supporting seniors in our communities. Many thanks to Here to Help U, Craigs Investment Partners, Whakatāne District Council and Waiariki Mentoring Services for their assistance in making this happen.



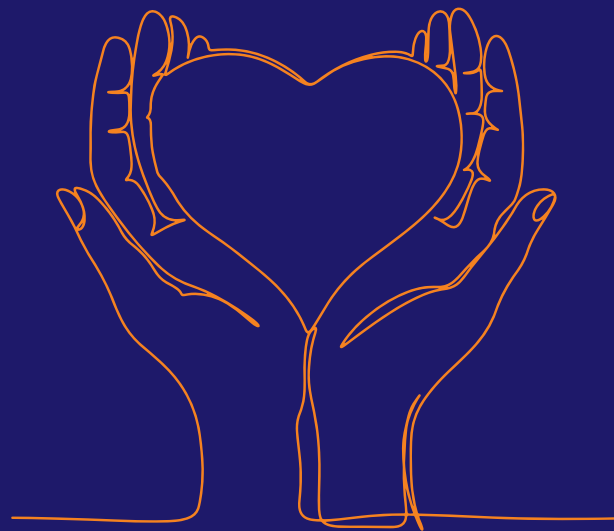


# Super Legacy for the Eastern Bay of Plenty

Regular giving via Super Legacy is an exciting initiative at the Eastern Bay Community Foundation that is working towards creating a better Eastern Bay of Plenty now and in the future, helping future generations and giving locals a way to give back.

At the Eastern Bay Community Foundation, we have 6 (and growing!) Donors who have chosen to donate their superannuation, or part of it, to the Community Foundation as a regular donation.

This generosity is an amazing way to make a difference long term in our community.



## What is Super Legacy?

Regular giving via Super Legacy offers over 65s an effective way to give back and make the Eastern Bay a great place to live.

Eligible people over 65 receive NZ Super regardless of their means or income with one percent of New Zealanders over 65 not claiming their Superannuation. There are some Super annuitants that are in a financial position where they can live comfortably without some or all of it.

Noting that while New Zealand has a relatively low rate of elder poverty compared with other countries, and superannuation is a lifeline for many in our communities.

There are some Superannuitants that are in a financial position where they can live comfortably without some or all of it.

Donating to a local community foundation is a great way to give back to the community you have lived and worked in.

If you're in a fortunate position where you don't need your super, consider giving some or all of it back to your community. Your contribution can make a meaningful difference right here at home.

Every contribution, big or small, serve as essential building blocks for creating positive change and a more promising future for our communities.

We would like to thank our SuperLegacy donors - what an amazing way to think of our community and work together to create a better EBOP for our children and grandchildren.





# Turning tragedy into something positive

Turning a tragedy into something positive and enduring is how the family, friends and rural connections of Rod McPherson view the Memorial Scholarship setup in his name following an early morning accident on a farm in Nukuhou, Whakatāne in March 2022.

The recipient of the scholarship for 2023 and 2024 has been Emma-Rose Black from Ōpōtiki who is studying at Massey University, the same University where Rod attended.

Emma-Rose says "I was lucky enough to have received the Rod McPherson Memorial Rural Scholarship in memory of Mr McPherson. It has not only eased the financial pressure that comes with studying but the support from the team at the Eastern Bay Community Foundation and Jaqs McPherson herself has been amazing. This support pushes me to keep striving toward my goals and I'm beyond grateful to have been given this opportunity and hopefully give back in the future."

Jacqui McPherson and Emma-Rose have become friends, and Jacqui is honored to be a mentor to such a bright young woman. The friendship that has resulted from the awarding of the Scholarship has been a real positive for both women.



*The team, up in the trees, at Canopy Tours, Rotorua*



*Fonterra Golf Tournament - supporting Eastern Bay Community Foundation and Rural Support Trust*



*Annual Dinner 2024 Sir Ian Taylor, guest speaker with guests Ngapera Rangiaho, Gina O'Brian and Trina Hayes*



*Trustee Robyn Woolsey with a new friend at the Wingspan show, Ngongotaha*

# Our progress

 **50** Funds giving back to the community forever

 **3** Scholarships

 **\$172,876** gifted to local charities or individuals via grants and distributions in 2024-2025 year

 **\$55,913** Support in kind

 **\$145,887** in pass through funds

 **Impact**

Mental health, music, environment, youth education and opportunities, health, social and parenting support, preserving heritage, Arts, disability support, housing, cancer support, support for Seniors, safe communities, active families.

 **20** Funds 'tagged' to benefit a specific group or charity

 **3** part time staff

 **9** Trustees

 **1282** Hours for Trustees and sub-committee members

 Charity Golf Tournament, Annual Dinner, Women's Impact Luncheon, Tawera Nikau mental health event and school visits, Xmas food parcels for vulnerable seniors in the Eastern Bay.

 **\$65,279** in endowment funds

 **\$5,590** in scholarships

 Governance and Strategic Planning

## OUR FOCUS

### TEAM

- 1 Team increased to 2.0 FTE by 2025
- 2 Team resourced to succeed
- 3 Team development activities

### GROW

- 7 Grow through donor engagement
- 8 Grow 6 new funds minimum per year
- 9 Grow to \$3M invested funds by 2025

### STORY

- 4 Story known by whole team & shared
- 5 Strategy for marketing development
- 6 Share our 'smarter way of giving' story

### SUSTAIN

- 10 Secure multiple funding streams
- 11 Sustain EBCF operations
- 12 Size of endowments \$20M in 20 years



# Our team

## Trustees



**Scottie McLeod**

Chairperson, Awakeri



**Jimmy Heal**

Grants and Distributions committee, People and Capability Committee, Marketing Committee, Awakeri



**Christine Mansell**

Treasurer, Ōhiwa



**Robyn Woolsey**

Grants and Distributions Committee, Ōpōtiki Kiwifruit Growers Community Fund committee member, Eastern Bay Women's Impact Fund Committee Member, Ōhope



**Bradley Shaw**

Marketing Committee, People and Capability Committee, Whakatāne District.



**Paul Nicolson**

Finance and Investments Committee, Ōhope



**Vivienne Barr**

Policy and Attestation committee, Eastern Bay Women's Impact Fund Committee Member, Awakeri



**Dean Cole**

Marketing Committee, Ōpōtiki



**Grant Lowe**

Finance and Investments Committee, Ōpōtiki

## Patrons



**Peter Anstis**

Patron, Ōpōtiki



**Ray Sharp**

Patron, Ōpōtiki

## Staff



**Gae Finlay**

Board Secretary, Ōhope



**Angela Jackson**

Foundation Manager, Whakatāne



**Mike Howe**

Engagement Manager, Ōpōtiki

## Corporate Supporters



## Friends of the Foundation





*Nā tō rourou,  
nā taku rourou ka ora ai te iwi*

With your food basket and my food  
basket the people will thrive